



TIFFANY & CO.

TIFFANY & CO.

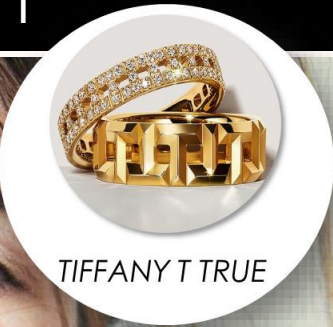
N1/SS 23 Collections
LIVE DECK

November 2022

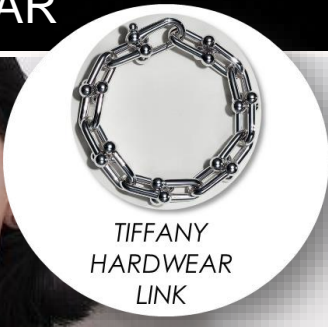
INTERNATIONAL COLLECTION INSPIRATION

TIFFANY & CO.

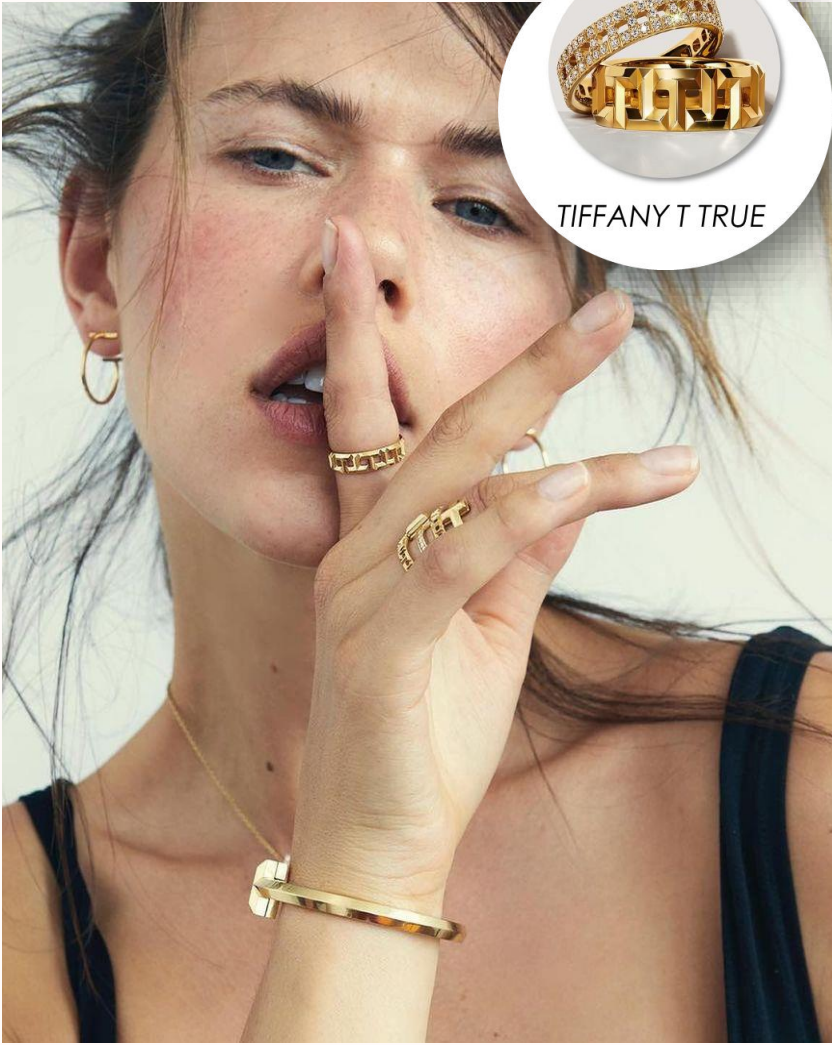
TIFFANY T



HARDWEAR



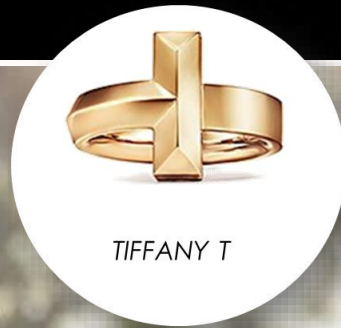
GEMSTONES



ASIAN DESIGN COLLECTION INSPIRATION

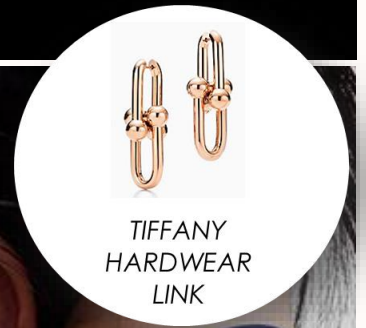
TIFFANY & CO.

TIFFANY T



TIFFANY T

HARDWEAR



TIFFANY
HARDWEAR
LINK



TOP #4 NOVELTIES ABOUT TIFFANY N1 23 – SS 23 COLLECTIONS

KEEP NURTURING NEW PRODUCT OFFER TOWARDS ELEVATION, DESIRABILITY AND NEW CONSUMERS OPPORTUNITY IN LINE WITH BRAND DIRECTION

SUSTAINABILITY

NEW TEMPLE TIP

UNIVERSAL FITTING

NEW COLOR PALETTES

#1



BIO – ACETATE
BIO – INJECTED
BIO – POLYAMIDE

#2



NEW TEMPLE TIPS WITH
ICONIC TF BLUE

#3



LARGER NOSEPADS

#4



NEW RANGE OF FULL COLOR AND
MODERN ACETATE PALETTE

N1 23 COLLECTION OVERVIEW

TIFFANY & CO.

N1 23

12 STYLES
+ 6 COLOR ADDS

6 SUN (50%)
3 UF - 1 AF

6 OPT (50%)
3 FF - 1 UF - 2 AF

AVG SRP PRICE SUN: 297 €/\$395
OPT: 307€/\$378

TIFFANY T



TF4205U F ADV PR
330€ / 439\$
(TBC)



TF4206U F PR
310€ / 412\$
(TBC)



TF2232U F ADV PR
310€ / 382\$
(TBC)



TF1152B with crystals AF
330€ / 406\$
(TBC)



TF2233B / F with crystals F
330€ / 406\$
(TBC)



TF2234B / F with crystals F
330€ / 406\$
(TBC)

HARDWEAR



TF4202U F
310€ / 412\$
(TBC)



TF3092 AF
310€ / 412\$
(TBC)



TF2231 / F F
270€ / 332\$
(TBC)

GEMSTONES



TF4203
290€ / 386\$
(TBC)



TF4204 PR
290€ / 386\$
(TBC)



TF1151 AF PR
270€ / 332\$
(TBC)

N1 23 ASIAN DESIGN OVERVIEW

TIFFANY & CO.

N1 23

8 STYLES

4 SUN (50%)

4 OPT (50%)

AVG SRP PRICE SUN: 290 € / 40000 ¥ / 3280 RMB
OPT: 280€ / 37172 ¥ / 3350 RMB

TIFFANY T



 **TF4209D** 
310€ / 42800 ¥ /
3470 RMB (TBC)



 **TF2236D**  
310€ / 41100 ¥ /
3480 RMB (TBC)



 **TF4211D** 
310€ / 42800 ¥ /
3470 RMB (TBC)



 **TF2238D** 
310€ / 41100 ¥ /
3480 RMB (TBC)

HARDWEAR



 **TF4210D**
290€ / 40000 ¥ /
3280 RMB (TBC)



 **TF2237D**
270€ / 35800 ¥ /
3280 RMB (TBC)



 **TF3093D**
290€ / 40000 ¥ /
3280 RMB (TBC)



 **TF1153D**
270€ / 35800 ¥ /
3280 RMB (TBC)

SS 23 COLLECTIONS OVERVIEW

TIFFANY & CO.

3 STYLES

2 SUN (67%)

1 UF – 1 FF

1 OPT (33%)

1 FF

AVG SRP PRICE

SUN: 320 €/\$426

OPT: 310€/ \$382

SS 23

HARDWEAR



TF4208U F ADV PR
 330€ / 439\$
 (TBC)



TF4207B / F with crystals F PR
 350€ / 439\$
 (TBC)



TF2235 / F F ADV PR
 310€ / 382\$
 (TBC)

TIFFANY T STORY - N1 23

TIFFANY & CO.

INTRODUCING 2 NEW EXECUTIONS OF TIFFANY T TEMPLE DÉCOR

INSPIRATION



PRODUCT UNIQUENESS

1

Tiffany T **Bold functional**



2

Tiffany T with **crystals**



3

Sophisticated color palette



STYLES

2 sun and 1 optical to make a strong look & feel statement

All 3 styles have **frontal and temple in Bio-Nylon fiber**



TF4205U ADV PR

TF4206U PR



TF2232U ADV PR

TIFFANY GEMSTONES STORY - N1 23

TIFFANY & CO.

CONTINUING LEVERAGING ON GEMSTONES FACETED CUTS AND COLOR PALETTE

INSPIRATION



TIFFANY
GEMSTONES

PRODUCT UNIQUENESS

- 1** *Faceted and geometric metal temple recalling gemstones cut*



- 2** *Crystal acetate on unisex and modern shape*



- 3** *Pastel color palette inspired by precious gemstones*



STYLES

2 sun and 1 optical to reveal the image seeker attitude



TF4203



TF4204 PR



TF1151 PR

TIFFANY HARDWEAR STORY - SS 23

TIFFANY & CO.

EXPLOITING A NEW BOLD EXECUTION TO ATTRACT THE NEW IMAGE SEEKER CONSUMER

INSPIRATION



PRODUCT UNIQUENESS

1 New HardWear bold execution



2 Metal Cap with lasered Tiffany & Co. Logo



*with crystals

3 Modern color palette



STYLES

2 sun and 1 optical to express a modern and trendy attitude

Fashion **Bio-Acetate frontal with Bio-Nylon fiber temple** with **hardwear gaugelink**



TF4208U

ADV PR



TF4207B / F



TF2235 / F

ADV PR

TIFFANY T & HARDWEAR STORIES – ASIAN DESIGNS – N1 23

TIFFANY & CO.

BUILDING UP ICONIC THEMES INTO ASIAN DESIGNS

INSPIRATION



PRODUCT UNIQUENESS

1 *Subtle iconic Tiffany T on temple*



2 *Delicate HardWear gauge link*



3 *Modern color palette*



STYLES

2 AD styles for China and 2 AD styles for Japan



TF4209D PR

TF2236D ADV PR



TF4210D

TF2237D

A diamond necklace with a large yellow diamond pendant. The necklace is made of a chain of small, round-cut diamonds. The pendant is a large, cushion-cut yellow diamond, which is the focal point of the piece. The necklace is displayed against a plain white background.

Thank You

TIFFANY&CO GLOBAL BRAND TEAM

CRISTINA CARCHIO – Senior License Caring Manager -

Cristina.Carchio@luxottica.com

ERIKA MARSANICH – Global Brand Manager -

Erika.Marsanich@luxottica.com

LUCREZIA DONNINI – Strategic Product Management –

Lucrezia.Donnini@luxottica.com

ARIANNA BERTA – Brand Manager Assistant (internship) –

Arianna.Berta@luxottica.com